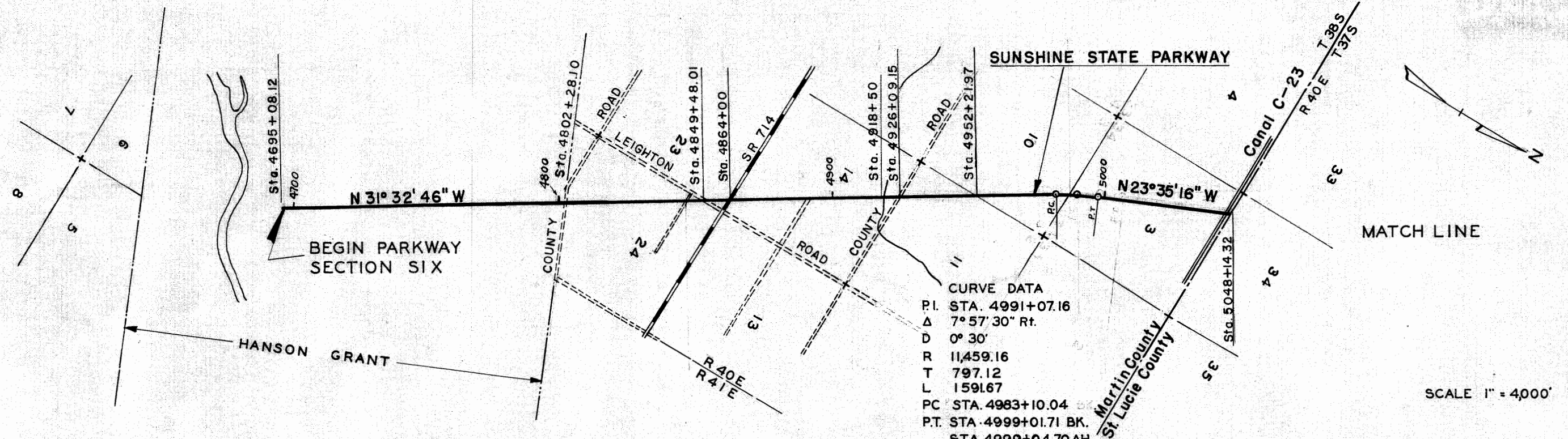


47926

FILED & RECORDED
IN MARTIN COUNTY, FLA.
1955 JUN -8 PM 1:06
DOROTHY PIERCE, CLERK
Lettie Zarnits, D. C.

Filed for record in the office of the Clerk of Circuit Court
for the County of Martin, State of Florida in Plat Book 3
Page 23 on the 8th day of June A.D. 1955
at 1:06 P.M.
Dorothy Pierce
Clerk of Circuit Court
Martin County, Florida.
By: Lettie Zarnits, D. C.



We, Thomas B. Manuel as Chairman and William T. Alsop as Secretary of the Florida State Turnpike Authority, do hereby certify that this is the first amended map revising the original map adopted June 30, 1954 by resolution of the Florida State Turnpike Authority filed the 24th day of August, 1954, Plat Book 3, Page 10, 11 and 12, Martin County, State of Florida, showing the location and survey of the Sunshine State Parkway, Section 6 in Martin County, Florida: Extending from a point 471.82 feet North and 356.86 feet West of the S.E. Corner of Lot No. 3 Block No. 27, St. Lucie Inlet Farms, (Part of John M. Hanson Grant) in a Northerly direction.

Prepared and adopted by the Florida State Turnpike Authority under the provisions of Chapter 28128, Laws of Florida Acts of 1953, by resolution of Florida State Turnpike Authority adopted May 5, 1955

Approved

CHAIRMAN J. B. Manuel
SECRETARY William T. Alsop

BAIL, HORTON & ASSOCIATES AND
CAPITOL ENGINEERING CORPORATION
By J. H. Horton
SECTION ENGINEER, SECTION 6
HOWARD, NEEDLES, TAMMEN & BERGENDOFF
By C. H. Peterson
GENERAL CONSULTANT